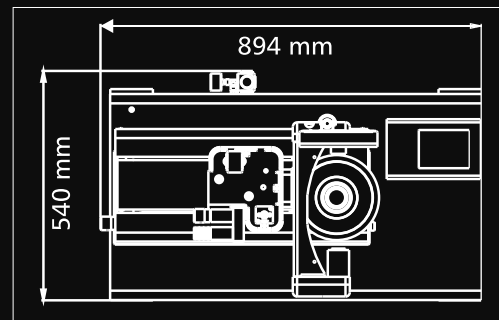
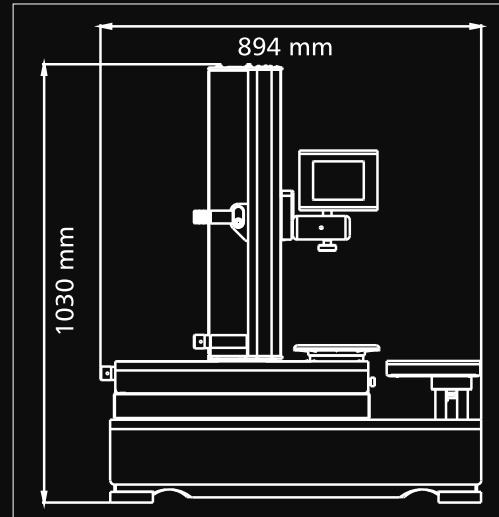


TECHNICAL FEATURES

- Measuring range: diameter max 400 mm (radius 200 mm); height max 500 mm.
- Machine structure in stainless-steel offering high mechanical resistance and long life.
- Base and column made of natural granite: linearity max error $4 \mu\text{m}/\text{Mt}$ certification with Taylor Hobson res. $1 \mu\text{m}/\text{Mt}$ electronic millesimal level.
- ISO/BT/HSK/VDI etc. Interchangeable rotating spindle-holder (to be specified) max run-out error $< 4 \mu\text{m}$.
- Double vault arc prismatic slideways: n°2 X axis slideways, n°1 Z axis slideway.
- Double re-circulating ball bearing slides, lubricated for life (3) (preloading slides/slideways: P/H class).
- Manual mechanical braking of the interchangeable spindle-holder rotation.
- Constant load Archimedean spiral spring (as opposed a mass counter-balance system).
- Vision-system for tool measuring and cutting inspection including:
 - TFT screen - colours $\varnothing 116 \times 87 \text{ mm}$, magnifications about 20X.
 - C-MOS sensor - Framed image area $6,4 \times 4,8 \text{ mm}$ VGA System.
- Machine operator interface through:
 - TFT 5,7" colour Touch Screen.
 - Technology with FLASH® 32 bit microprocessor.
 - LINUX operating system.
 - Data storage on SD card.
 - X and Z axes block management with control maximum speed of translation 2mm/sec.
- Standard software:
 - CNC machine origin management and adapters.
 - Tool list creation and/or single tool.
 - TOOLINGUP to manage:
 - tools set and Post Processor universal generator;
 - magnetic chip code-holders (Balluff for example, hardware not included);
 - multi-cutting tools.
- Optical Equipment:
 - Telecentric lens.
 - Doublet lenses at low F/Number in order to eliminate the error of the clearness circle.
 - Episcopic illuminator with ring lens and red leds; diasopic illuminator with red, puntiform light led.
- ELBO CONTROLLI Linear Transducers in optical glass type SLIDE 371 certified HP laser:
 - Axes resolution: X = $1 \mu\text{m}$, Z = $1 \mu\text{m}$.
- Anti-dust cover provided for when not in use.
- Overall dimensions: Length = 894 mm, Height = 1030 mm, Depth = 540 mm



elbo controllli 

Via S. Giorgio, 21 - 20036 Meda (MI) - Italy
Tel. +39.0362.342745 - Fax +39.0362.342741
info@elbocontrolli.it - www.elbocontrolli.com

Distributed by

SPECIFICATIONS SUBJECT CHANGE WITHOUT PRIOR NOTICE

Sethy



Tool Presetter



Manual axes movement. Axis unclamping by means of a single pneumatic control system. Approach speed controlled via software: 2 mm/sec.



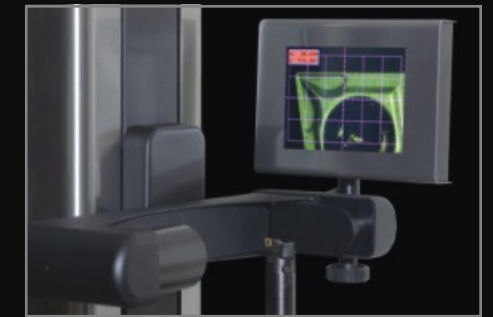
Micrometric registration of X and Z axes by means of two wheels which are essential for the collimation of the measure both with a fixed target function and in self-collimation.



Interchangeable revolving spindle with mechanical rotation brake. Two preloaded ball cages allow a concentricity accuracy within 4 μ m.



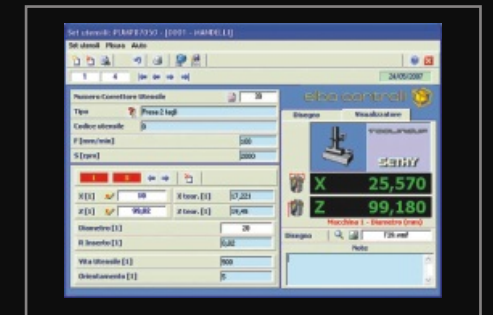
Base and column made of ground granite. The thermal inertia of this material allows the machine to be placed directly in the shop. Mechanical elements manufactured from stainless steel.



Camera system for measuring and inspection procedures. C-MOS sensor, punctiform and toroidal red light double illuminator. Telecentric optic system with low F/Number.



LCD touch panel display and software on a LINUX platform for a quick and easy operation of the machine and measuring functions.



TOOLINGUP software for post processing and tool table management. An intuitive, flexible and powerful software which allows adapting the format of the measured values to those of a CNC for their subsequent transmission.

MECHANICS
ELECTRONICS
OPTICS
SOFTWARE

by

elbo controllii